



~50% after 1h  
>75% after 4h



- Infant Insomnia
- Reduction of the time required to get to sleep
- Promotes sleep quality and duration
- Autism spectrum disorders (ASD)
- Sleep disorders in adolescents

Food Supplement



MADE IN ITALY

# INSOMNIA



## DESCRIPTION

**Marisleep Retard Drops** is an extended- and delayed-release melatonin dietary supplement. Melatonin contributes to the reduction of the time required to get to sleep. the beneficial effect is achieved by taking, just before bedtime, 1 mg of melatonin.



Intake of 1 ml daily is recommended.

## THERAPEUTIC INDICATIONS

- Circadian Rhythm Regulation
- Treatment of Insomnia
- Improvement of Sleep Quality
- Support for Sleep Disorders Associated with Illness, such as anxiety or depression

## PRESENTATION

Drops 20 ml in bottle

## REGULATORY STATUS

- Free sale certificate
- Notification at Italian Ministry of Health
- Certificate of Origin (at the time of invoicing)
- ISO 9001

**AVERAGE CONTENT** in 1 ml **Q.ty**

**Melatonin in microgranules at leisure time** 1 mg



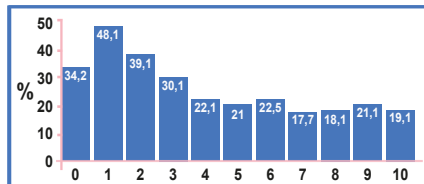
## Insomnia

Inability to sleep, although physiological need of human body



- ✓ Tiredness
- ✓ Irritability
- ✓ Difficult concentrating

Prevalence of SLEEP DISORDERS in a pediatric age



The circadian rhythm begins to arise around 2 to 3 months of age, leading to longer periods of sleep at night. After 4 months of age the sleep rhythm tends to adapt to the external rhythms, so it is necessary to help the child to synchronize his/her own endogenous rhythm with the outside in order to focus the sleep at night.

PROSPECTUS DURATION OF SLEEP recommended by experts

AGE	APPROPRIATE DURATION (HOURS)	NOT APPROPRIATE DURATION (HOURS)
0 - 3 months old	from 11 to 19	less than 11 - more than 19
4 - 11 months old	from 10 to 18	less than 10 - more than 18
1 - 2 years old	from 9 to 16	less than 9 - more than 16
3 - 5 years old	from 8 to 14	less than 8 - more than 14
6 - 13 years old	from 7 to 12	less than 7 - more than 12
14 - 17 years old	from 7 to 12	less than 7 - more than 11
18 - 25 years old	from 6 to 11	less than 6 - more than 11
26 - 64 years old	from 6 to 10	less than 6 - more than 10
> = 65 years old	from 4 to 9	less than 5 - more than 9



Lack of regular sleep can lead to physical and psychological negative effects.



Sleep during infancy is important to:

- The maturation of the brain and central nervous system
- Future cognition, temperament, and psychomotor development.



SWEET and PLEASANT TASTE



EASY ADMINISTRATION is applicable on the pacifier



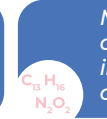
Circadian rhythm regulation



Protection from pre and postnatal ocular pathologies



Brain development



Melatonin deficiency is associated with delayed intrauterine development and reduced cerebellar size.