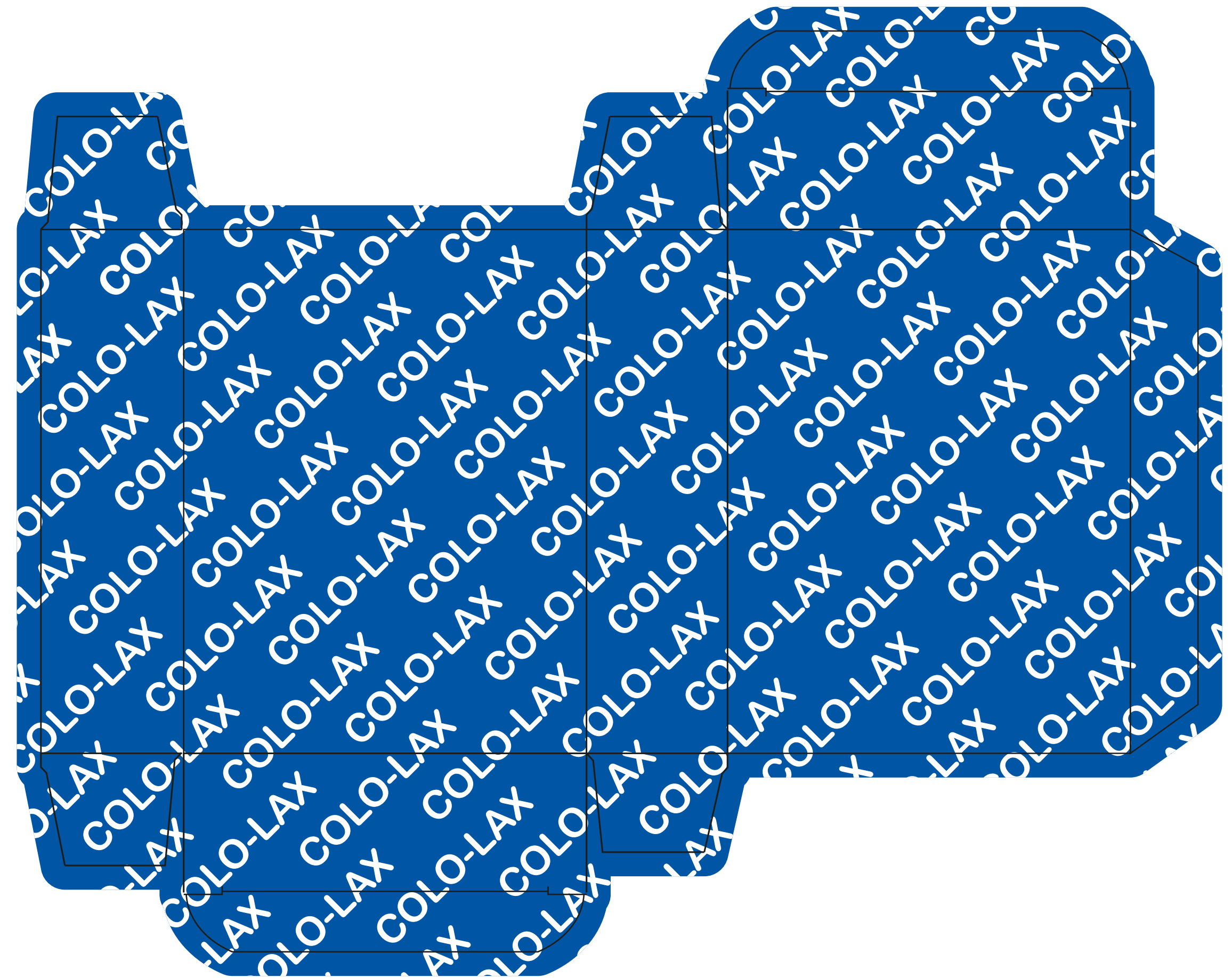


Product: COLO-LAX
 Internal code: FT.IA.676
 Country:
 Company:
 Operator:



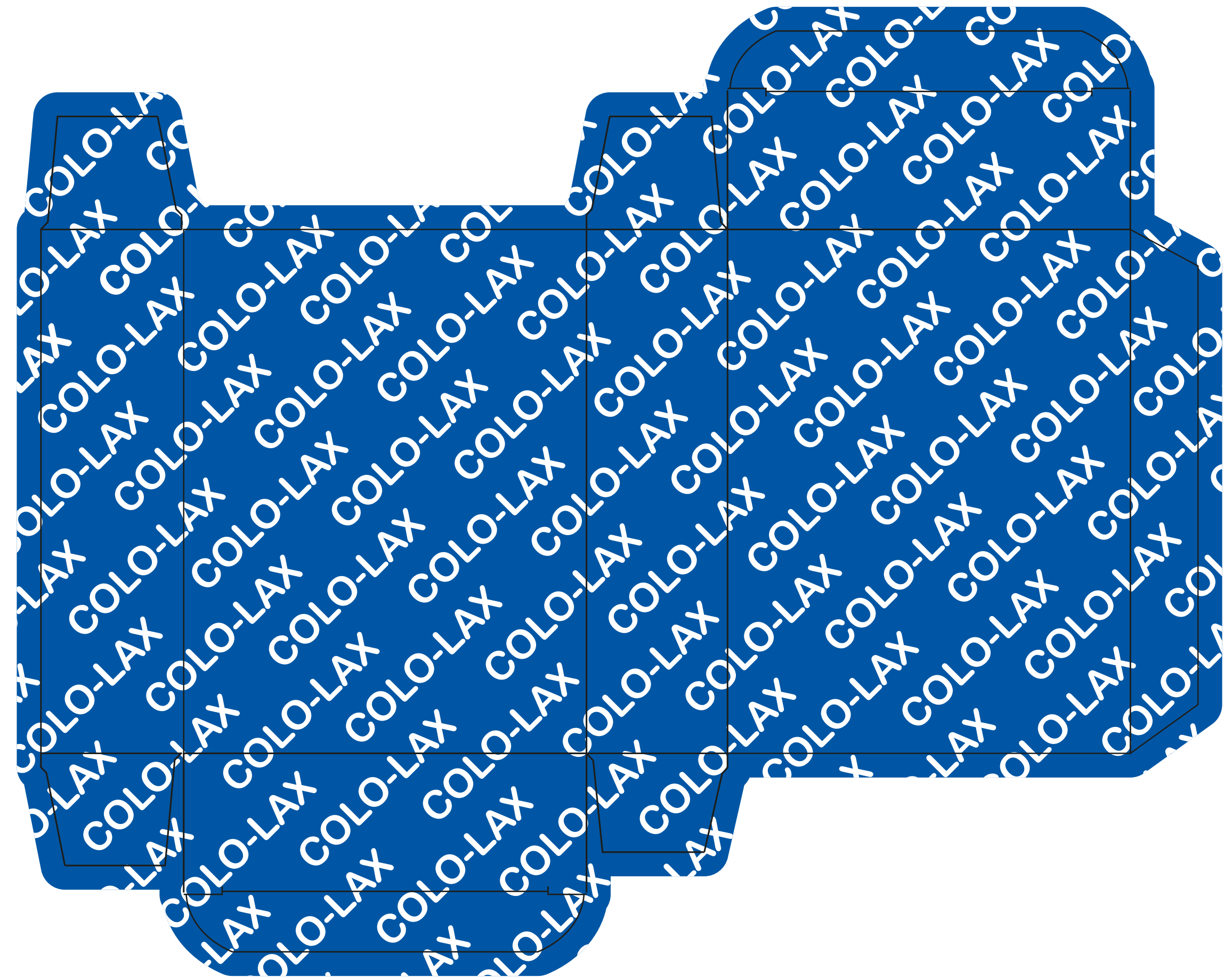
INTERNAL PRINT



Product: COLO-LAX
 Internal code: FT.IA.676
 Country:
 Company:
 Operator:



INTERNAL PRINT



Product: COLO-LAX
 Internal code: FT.IA.676
 Country:
 Company:
 Operator:



Colo-lax is a food supplement based on Monosodium and Disodium Phosphate, Glycerol, Cascara and Boldo. Cascara and Boldo support the regularity of intestinal transit and digestive function.

Directions of Use: Conditions requiring complete emptying of the large intestine:

The recommended dose is 4 sachets of 20 ml. Dilute the contents of the first sachet in a glass of water (250 ml) and drink it; immediately take another glass of water (250 ml). Repeat this operation for the other three sachets, trying to take a total of about 2 liters of water.

If the test is carried out in the morning:
 the day before the examination:
 - dissolve two sachets of product in 150 ml of water, to drink at 4 P.M.
 - dissolve two sachets of product in 150 ml of water, to drink at 8 P.M.
 Within 2 hours of taking product drink 1 litre of liquids (water, tea).

If the exam is carried out in the afternoon:
 the day before the examination:
 - dissolve two sachets of product in 150 ml of water, to drink at 8 P.M.
 Within 2 hours after taking product drink 1 litre of liquids (water, tea).

The morning of the exam day:
 breakfast with tea, coffee and 1-2 rusks
 - dissolve two sachets of product in 150 ml of water, to drink at 4 A.M.
 Within 2 hours after taking the product drink 1 litre of liquids (water, tea).

Storage Conditions: Store at a temperature between 12° C and 25°C in a dry place. Avoid exposure to heat sources and sunlight. The date of minimum durability refers to the product correctly stored in its intact packaging. Keep the product in the original packaging.

Warnings: Keep out of reach of children under 3 years of age in order to avoid the accidental intake of the product. Do not exceed the recommended daily dose. Supplements are not intended as a substitute for a varied, balanced diet and a healthy lifestyle. Do not use the product if the package is not intact. Use is not recommended in cases of ascertained hypersensitivity to one or more of the ingredients listed. Given the nature of the ingredients contained, the product may look different from batch to batch: this does not affect the quality of the product. Do not administer to children under 12 years. In case of pregnancy and breastfeeding consult your doctor. Do not use for prolonged periods without consult your doctor.

Manufactured by:
 Gruppo Farmaimpresa srl
 Head Office: Via Cipro, 1
 25124 Brescia (BS) - Italy
 Operative Site:
 Via Il Dietro Corte,
 snc Il Traversa - 81030 Teverola (CE) - Italy



FT.IA.676F03

